

Anti-PHTF2 antibody

Cat. No.	ml223681
Package	25 µl/100 µl/200 µl
Storage	-20°C, pH7.4 PBS, 0.05% NaN ₃ , 40% Glycerol

Product overview

Description	Anti-PHTF2 rabbit polyclonal antibody
Applications	ELISA, IHC
Immunogen	Fusion protein of human PHTF2
Reactivity	Human, Mouse
Content	0.4 mg/ml
Host species	Rabbit
Ig class	Immunogen-specific rabbit IgG
Purification	Antigen affinity purification

Target information

Symbol	PHTF2
Full name	putative homeodomain transcription factor 2
Synonyms	
Swissprot	Q8N3S3

Target Background

PHTF2 (putative homeodomain transcription factor 2) is a 785 amino acid protein that contains one basic helix-loop-helix (bHLH) domain and belongs to the PHTF family. Homologous to PHTF1, PHTF2 exhibits strongest similarity within putative homeodomains and both N- and C-terminal regions. Existing as four alternatively spliced isoforms, PHTF2 localizes to nucleus and participates in DNA binding. PHTF2 may also play a role in transcriptional regulation. While PHTF1 is expressed mainly in testis, PHTF2 is predominantly expressed in muscle, which suggests that both may have acquired different functions after their duplication and divergence. The gene that encodes PHTF2 maps to human chromosome 7q11.23.

订购热线: 4008-898-798

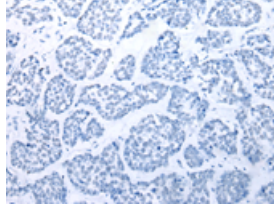
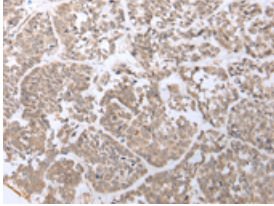
Applications

Immunohistochemistry

Predicted cell location: Nucleus

Positive control: Human esophagus cancer

Recommended dilution: 20-100

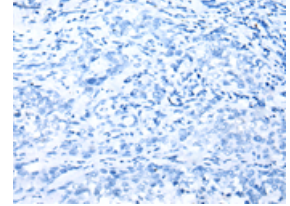
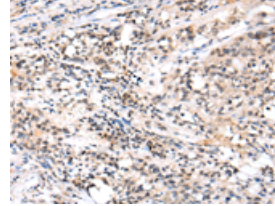


The image on the left is immunohistochemistry of paraffin-embedded Human esophagus cancer tissue using ml223681(PHTF2 Antibody) at dilution 1/20, on the right is treated with fusion protein. (Original magnification: $\times 200$)

Predicted cell location: Nucleus

Positive control: Human lung cancer

Recommended dilution: 20-100



The image on the left is immunohistochemistry of paraffin-embedded Human lung cancer tissue using ml223681(PHTF2 Antibody) at dilution 1/20, on the right is treated with fusion protein. (Original magnification: $\times 200$)

ELISA

Recommended dilution: 2000-5000

联系电话: 4008-898-798, 021-61725725

联系QQ: 2881505695, 2881505696

邮箱: mlbio_cn@yeah.net

网址: www.mlbio.cn