

Anti-MFSD2A antibody

Cat. No.	ml261903
Package	25 µl/100 µl/200 µl
Storage	-20°C, pH7.4 PBS, 0.05% NaN ₃ , 40% Glycerol

Product overview

Description	Anti-MFSD2A rabbit polyclonal antibody
Applications	ELISA, WB, IHC
Immunogen	Synthetic peptide of human MFSD2A
Reactivity	Human, Mouse
Content	0.8 mg/ml
Host species	Rabbit
Ig class	Immunogen-specific rabbit IgG
Purification	Antigen affinity purification

Target information

Symbol	MFSD2A
Full name	major facilitator superfamily domain containing 2A

Synonyms	MFSD2
Swissprot	Q8NA29

Target Background

MFSD2 (major facilitator superfamily domain containing 2), also known as MFSD2A, is a 543 amino acid multi-pass membrane protein of the endoplasmic reticulum that is involved in beta-adrenergic signaling during thermogenesis. Existing as three alternatively spliced isoforms, MFSD2 plays a role in G1 regulation and is encoded by a gene that maps to human chromosome 1p34.2. Human chromosome 1 spans 260 million base pairs, contains over 3,000 genes, comprises nearly 8% of the human genome and houses a large number of disease-associated genes, including those that are involved in familial adenomatous polyposis, Stickler syndrome, Parkinson's disease, Gaucher disease, schizophrenia and Usher syndrome.

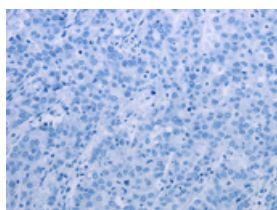
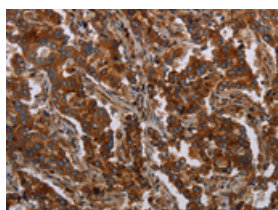
Applications

Immunohistochemistry

Predicted cell location: Cytoplasm

Positive control: Human liver cancer

Recommended dilution: 25-100

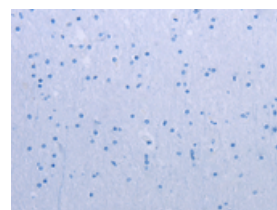
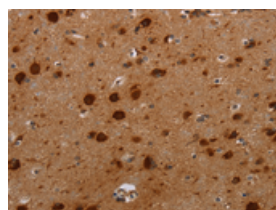


The image on the left is immunohistochemistry of paraffin-embedded Human liver cancer tissue using ml261903(MFSD2A Antibody) at dilution 1/25, on the right is treated with synthetic peptide. (Original magnification: $\times 200$)

Predicted cell location: Cytoplasm

Positive control: Human brain

Recommended dilution: 25-100



The image on the left is immunohistochemistry of paraffin-embedded Human brain tissue using ml261903(MFSD2A Antibody) at dilution 1/25, on the right is treated with synthetic peptide. (Original magnification: $\times 200$)

Western blotting

Predicted band size: 60 kDa

Positive control: Human thyroid cancer, mouse liver and human fetal liver tissue, A549 and 293T cells

Recommended dilution: 500-2000

Gel: 8%SDS-PAGE

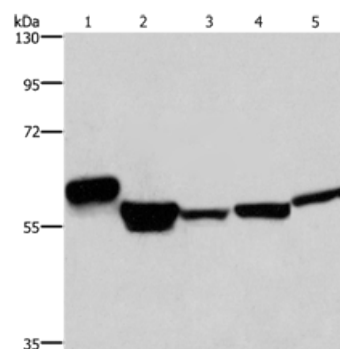
Lysate: 40 µg

Lane 1-5: Human thyroid cancer tissue, mouse liver tissue, human fetal liver tissue,
A549 cells, 293T cells

Primary antibody: ml261903(MFSD2A Antibody) at dilution 1/300

Secondary antibody: Goat anti rabbit IgG at 1/8000 dilution

Exposure time: 1 minute



ELISA

Recommended dilution: 1000-2000

联系电话: 4008-898-798, 021-61725725

联系QQ: 2881505695, 2881505696

邮箱: mlbio_cn@yeah.net

网址: www.mlbio.cn