

## Anti-SLC38A1 antibody

<b>Cat. No.</b>	ml262235
<b>Package</b>	25 µl/100 µl/200 µl
<b>Storage</b>	-20°C, pH7.4 PBS, 0.05% NaN <sub>3</sub> , 40% Glycerol

### Product overview

<b>Description</b>	Anti-SLC38A1 rabbit polyclonal antibody
<b>Applications</b>	ELISA, WB, IHC
<b>Immunogen</b>	Synthetic peptide of human SLC38A1
<b>Reactivity</b>	Human, Mouse, Rat
<b>Content</b>	0.2 mg/ml
<b>Host species</b>	Rabbit
<b>Ig class</b>	Immunogen-specific rabbit IgG
<b>Purification</b>	Antigen affinity purification

### Target information

<b>Symbol</b>	SLC38A1
<b>Full name</b>	solute carrier family 38 member 1

**Synonyms**                      ATA1; NAT2; SAT1; SNAT1

**Swissprot**                      Q9H2H9

#### **Target Background**

Amino acid transporters play essential roles in the uptake of nutrients, production of energy, chemical metabolism, detoxification, and neurotransmitter cycling. SLC38A1 is an important transporter of glutamine, an intermediate in the detoxification of ammonia and the production of urea. Glutamine serves as a precursor for the synaptic transmitter, glutamate .

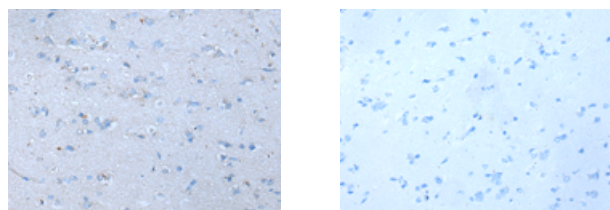
## Applications

### Immunohistochemistry

Predicted cell location: Cytoplasm and Cell membrane

Positive control: Human brain

Recommended dilution: 10-50



The image on the left is immunohistochemistry of paraffin-embedded Human brain tissue using ml262235(SLC38A1 Antibody) at dilution 1/25, on the right is treated with synthetic peptide. (Original magnification:  $\times 200$ )

### Western blotting

Predicted band size: 54 kDa

Positive control: Human liver cancer tissue and Human placenta tissue lysates

Recommended dilution: 200-1000

Gel: 6%SDS-PAGE

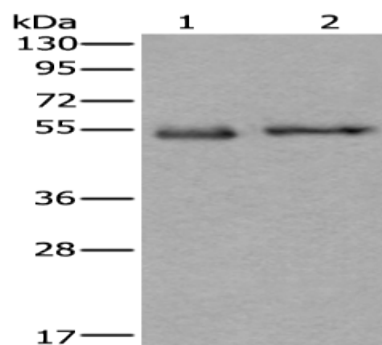
Lysate: 40  $\mu$ g

Lane 1-2: Human liver cancer tissue and Human placenta tissue lysates

Primary antibody: ml262235(SLC38A1 Antibody) at dilution 1/250

Secondary antibody: Goat anti rabbit IgG at 1/8000 dilution

Exposure time: 2 minutes



#### ELISA

Recommended dilution: 5000-10000

联系电话: 4008-898-798, 021-61725725

联系QQ: 2881505695, 2881505696

邮箱: [mlbio\\_cn@yeah.net](mailto:mlbio_cn@yeah.net)

网址: [www.mlbio.cn](http://www.mlbio.cn)