

兔抗 PHTF1 多克隆抗体

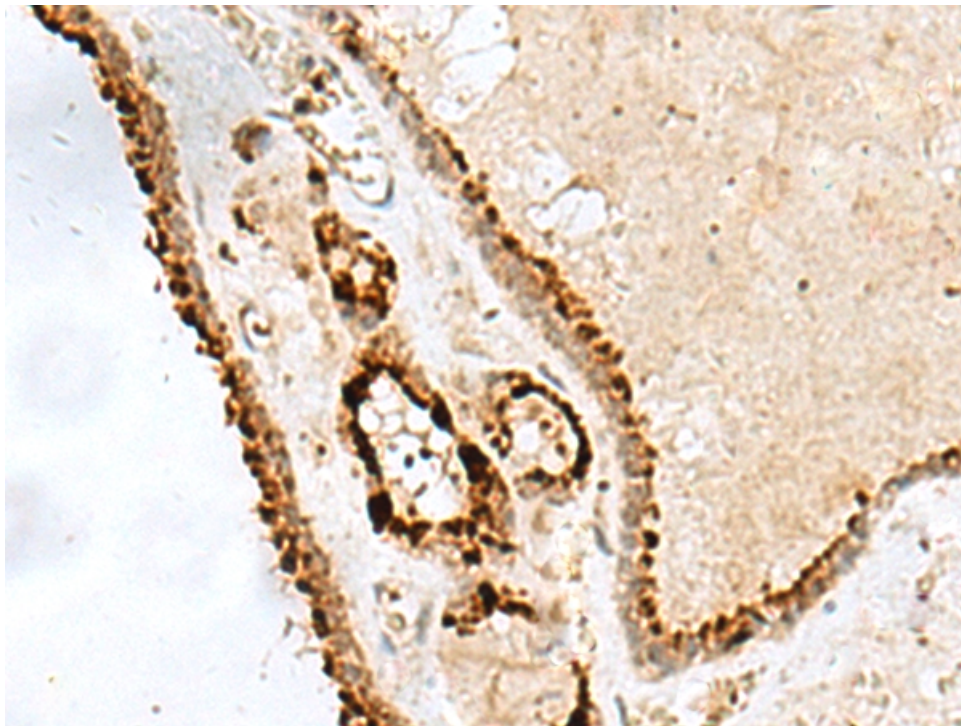
- 中文名称：兔抗 PHTF1 多克隆抗体
- 英文名称：Anti-PHTF1 rabbit polyclonal antibody
- 别名：putative homeodomain transcription factor 1; PHTF
- 相关类别：一抗
- 储存：冷冻（-20℃）
- 宿主：Rabbit
- 抗原：PHTF1
- 反应种属：Human, Mouse
- 标记物：Unconjugate
- 克隆类型：rabbit polyclonal

技术规格

Background:

PHTF1 (putative homeodomain transcription factor 1), also known as PHTF, is a potential transcription regulator. It is a ubiquitously expressed integral, multipass membrane protein with predominant expression in testis. PHTF1 is associated with the ER (endoplasmic reticulum) and contains one bHLH (basic helix-loop-helix) domain. It is present in the cell during meiosis and spermiogenesis but, by the end of spermiogenesis, is released from the mature cell within the residual bodies. This implies that PHTF1 may play a role in the spermatozoa maturation process. In addition, P

	HTF1 is believed to interact with FEM1B and may be responsible for recruiting FEM1B to the surface of the ER membrane. This suggests that PHTF1 acts as a sequestering or anchoring protein for FEM1B. Two PHTF1 isoforms exist due to alternate splicing events. Isoform 2 is the shorter form and lacks the amino acid residues 648 to 762.
Applications:	ELISA, IHC
Name of antibody:	PHTF1
Immunogen:	Fusion protein of human PHTF1
Full name:	putative homeodomain transcription factor 1
Synonyms:	PHTF
SwissProt:	Q9UMS5
ELISA Recommended dilution:	5000-10000
IHC positive control:	Human thyroid cancer
IHC Recommend dilution:	20-100



mlbio 酶联生物
Good elisakit producers